



Where Technology and Experience Work Together

Web Shield

Comprehensive Web-based Application for Fleet and Fuel Management

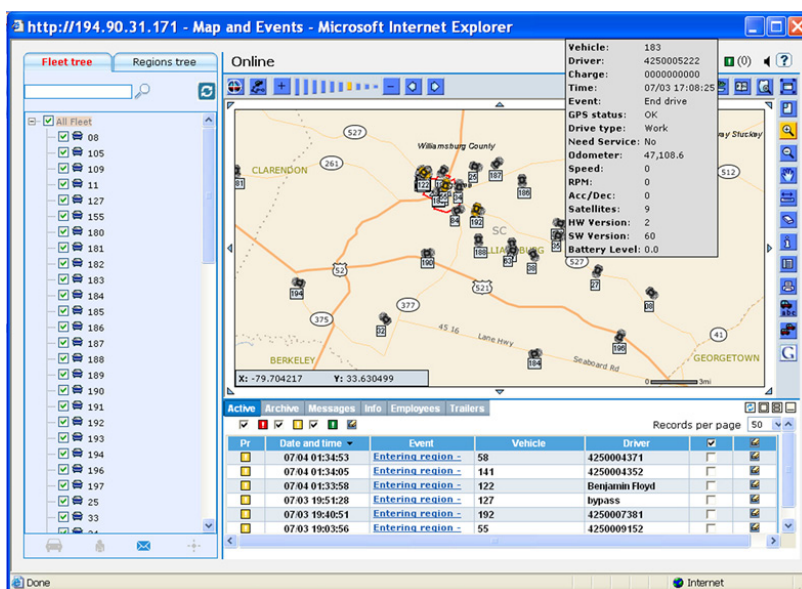


Web Shield is a comprehensive Web-based application to display and manage data compiled from SCI's fleet and fuel management products. With WebShield, fleet managers have a wide variety of information at their fingertips for real-time vehicle tracking, asset management, and driver monitoring.

WebShield processes this information to compile extensive, user-defined reports, and to provide fleet and fuel resource managers with a comprehensive set of fleet management tools.

Management

- Set company specific parameters
- Manage vehicles and drivers individually, by project, or by department
- Fuel pump management
- Integrated, fleet-wide trip and refuel records
- Supports all offline and online SCI products including Mile Shield, and FuelShield in a single interface



Communications

- Integrated communications server receives, processes, and transmits data between on board fleet management products, fuel pumps, RF stations, and the main WebShield databases
- Uses GSM and GPRS for SCI's online products
- Supports more than 15,000 online vehicles on each ASP site
- Supports TCP/IP
- Mapping
- Supports Google Maps and Open Street Maps
- Built-in advanced ArcIMS map engine supports vector and scanned maps from all map vendors
- Map tools for zoom, pan, address search, add customer POI, map layers, job assignments, etc.
- Online tracking with full map support
- Enter/leave predefined regions with online alerts
- Offline map-based reports to view trip history, with on-map trip replay
- Fully integrated trip report/map engine
- Reports
- Generate more than 100 reports based on predefined parameters and fleet usage.
- Fleet management by exception
- User predefined reports to receive by e-mail
- Integration with external peripheral software
- Supports SMS and Web alerts



CALL NOW (800) 831-0220
E-mail: sales@sciww.com www.sciww.com

Product Support Information

Driver and Vehicle Data Log

Driver ID, journey start and end times plus total mileage, maximum speed recorder, speeding record with optional driver alarm, total Idle time and RPM counter, driver acceleration and deceleration patterns, digital/analog sensors, black box accident analysis, service schedule alerts by mileage/time

WebShield Specifications

Regional Analyzer	Real Time Exit/Entry for 10,000 vehicles (speed -10 Millisecond per New Position)
Reverse Geo-coding	Vehicle address from X,Y location
Alerts	On-map visual alerts - vehicle color change, audio alarm, SMS and e-mail notifications.
Total Field Management	Mobile Phone-dedicated login Web site for fleet display and control for anywhere anytime management

Hardware/Software Requirements

From two to five Microsoft® Windows® 2000/2003 servers
Map Engine & Regional Analyzer (Optional)
MS SQL Server 2005 Database
GSM/GPRS communications (depends on selected product)
